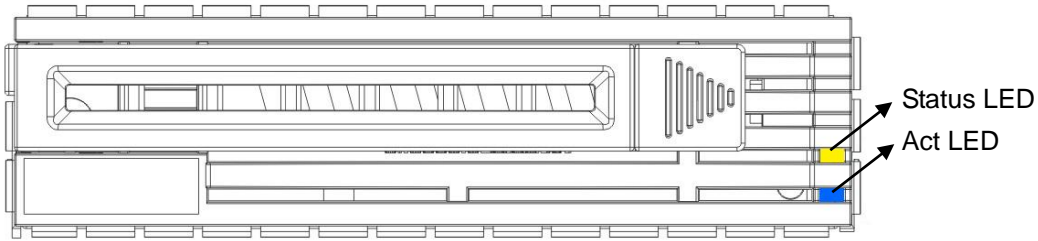


## EX4M24 Backplane (EX-BP-2U12-SGPIO)

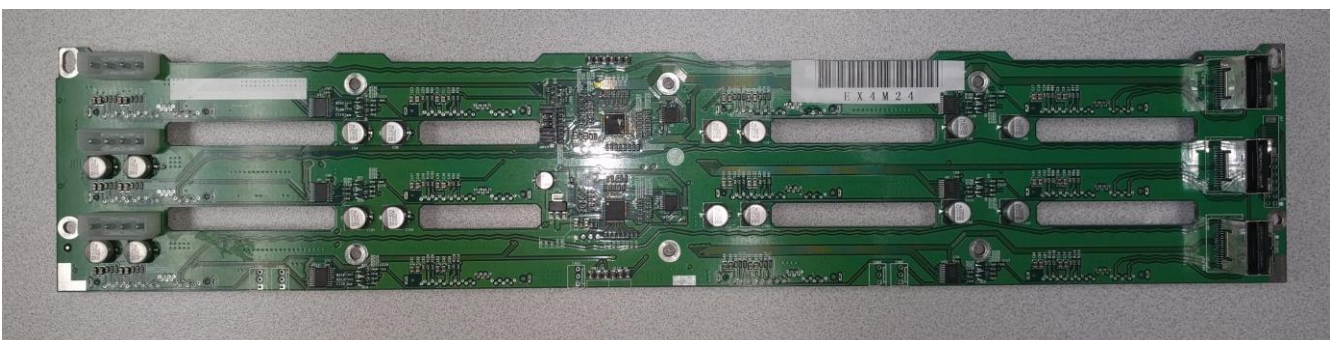
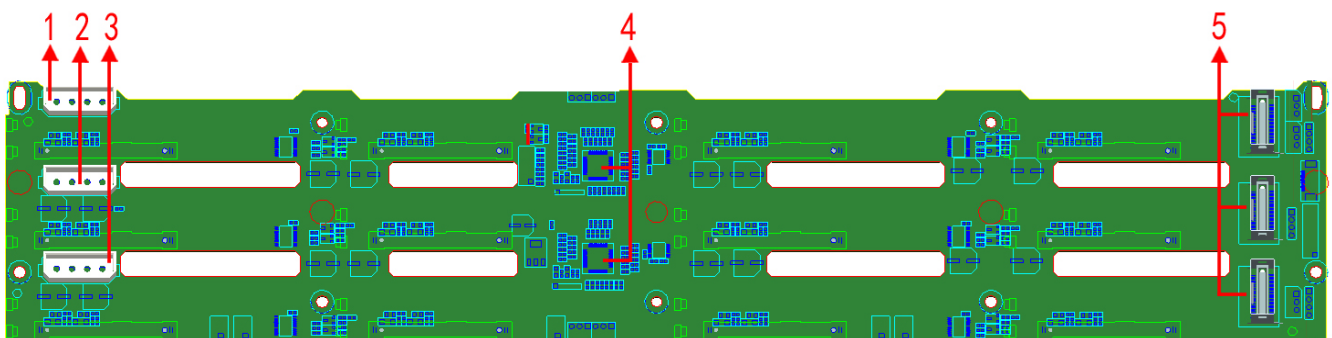
### Hard Drive LED:



- (1) Status LED (amber, red)
- (2) Act LED (blue)
- (3) LED:

Indicator	Blue	Amber	Red
w/o HDD	Off	Off	Off
w/ HDD	Solid	Off	Off
HDD activity	Blinking 4Hz/s	Off	Off
HDD locate	Solid	Blinking	Off
HDD failure	Solid	Off	Solid
Offline	Solid	Off	Off
RAID rebuild	Whole disk array blinking 4Hz/s	Off	Hot spare blinking 1Hz/s
Hot spare	Solid	Off	Off

### EX4M24 Backplane:



EX4M24 backplane (2x EX-BP-2U12-SGPIO)			
1、 2、 3	3x molex power connector	5	3x SFF-8087 6.0Gb/s connector
4	2x SGPIO chipset		

Hard Drive Connector:

