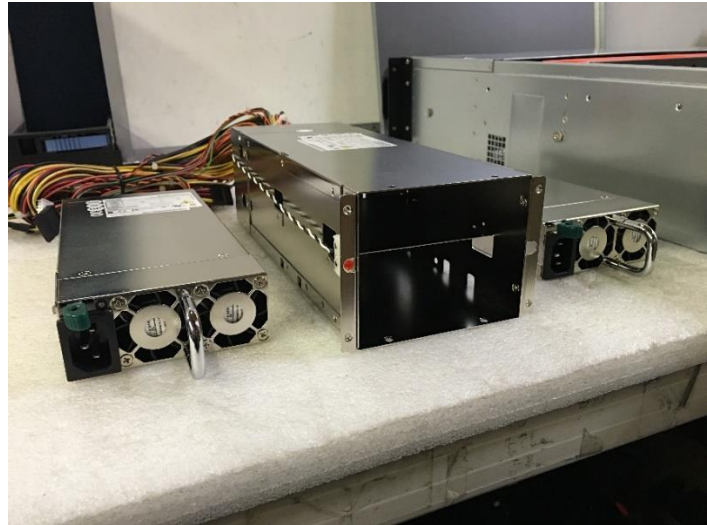


IS-500S2UP/IS-600S2UP/IS-700S2UP with E2M12HD Chassis

Step 1:

Take out power supply modules and remove both side brackets.

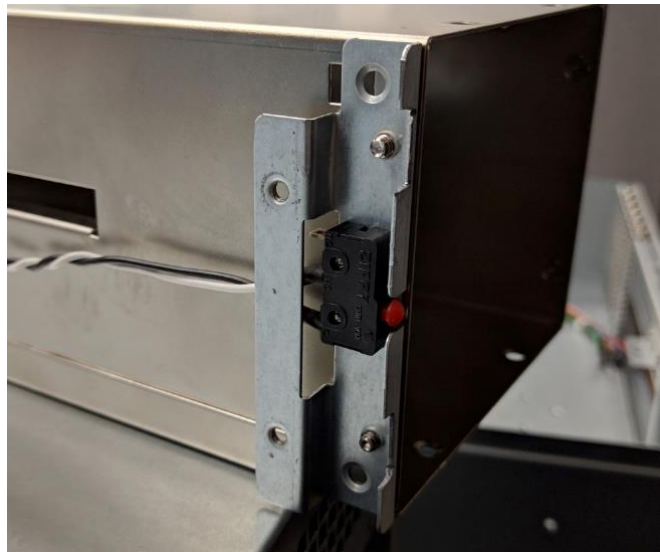


Step 2:

Remove reset button from the original PSU bracket and secure it to **BRT-E2M12HD-IS-L** bracket.

Step 3:

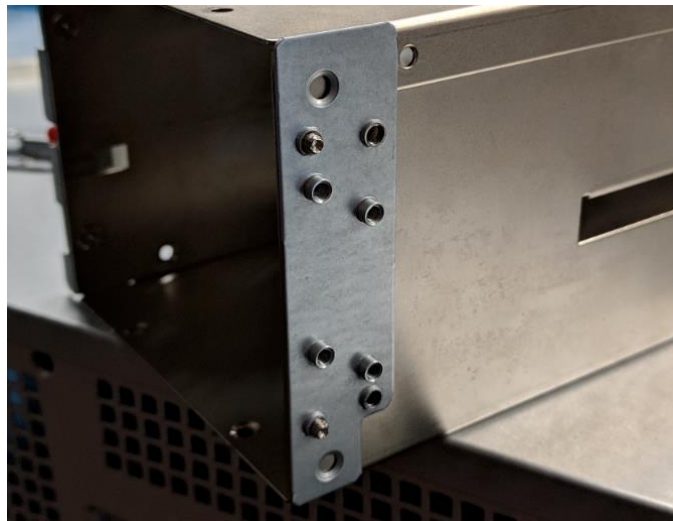
Install BRT-E2M12HD-IS-L onto left side of the power supply.



Step 4:

Install BRT-E2M12HD-R onto right side of the power supply.

Make sure the direction is correct as the image shown.



Step 5:

Secure power supply to chassis.

Step 6:

Finish

