

# BPN-124K-HD

5.25" to 4x 2.5" SATA 12Gb/s Hotswap  
Trayless Drive Cage

## User's Manual



### BPN-124K-HD Manual

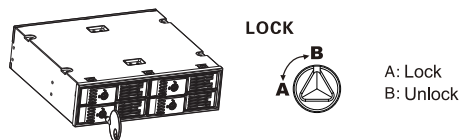
#### Specifications

- Support HDD Thickness from 9.5 to 12.5mm
- Plug & Play, Hot swappable
- Blue steady LED for power ; Blue blinking LED for activity
- Interface: 2.5" SAS/SATA HDD/SSD
- Supports Transfer Rate up to 12Gb/s
- Weight : 700g/ 1.54lb
- Dimensions : 142(L) x 148 (W) x 42(H) mm/ 5.59"x 5.83"x 1.65"
- Operation Temperature : 0° ~ 55°C/ 32° ~ 131°F

#### Package Content

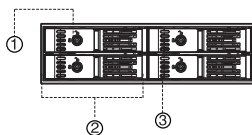
Accessories	Quantity
BPN-124K-HD	1 pcs
SATA Data Cable	4 pcs
SATA+4PLED Y Cable	2 pcs
Screw	4 pcs
Manual	1 pcs
key	2 pcs

**Switching key** Triangular lock unlock with the key  
(clockwise rotated 90 degrees),



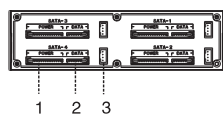
#### Front panel

1. Lock
2. Easy latch door
3. HDD LED indicator

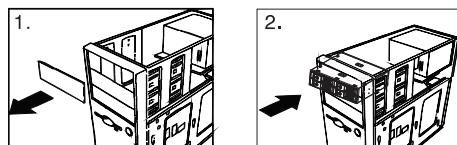


#### Rear panel

1. SATA power connector (15P)
2. SATA data connector(7P)
3. LED access port(4P)

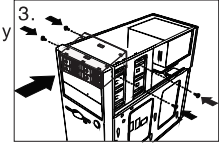


#### Installation



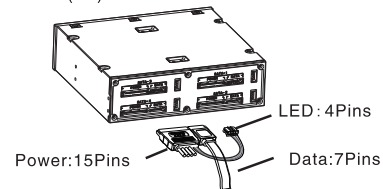
1. Remove the slot cover of an empty floppy bay.
2. Carefully insert the BPN-124K-HD HDD cage into the bay and push it inward until the BPN-124K-HD HDD cage's screw hole is aligned with the hole of the bay.

3. Secure the BPN-124K-HD HDD cage is packed with screws, use 2 screws on each side to securely hold the device.



#### Connect the HDD cage cable

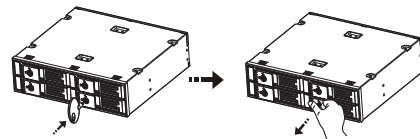
1. Insert the SATA 15P connector into the BPN-124K-HD's 15P connector, connect the big power 4P connector to the PC's 4P power plug, and the small 4P LED wire connector to the 4P LED port at the back of BPN-124K-HD.
2. Insert one end of the SATA data cable to BPN-124K-HD, another end(7P) to either the mother board.



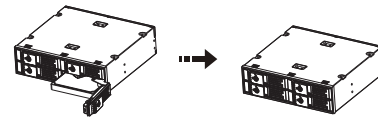
1. Be sure to connect the 4P LED wire, or the LED indicator will not be lighted up.
2. Before connecting the SATA data cable & SATA+4PLED Y cable with the PC or with BPN-124K-HD HDD cage, please check there is no object on or beside the terminals that may effect the mechanical assembly or become a possible source of an electrical short.

#### Install HDD

1. Triangular lock, unlock with the key (counter-clockwise rotated 90 degrees), open the panel;



2. Put the 2.5" HDD into the BPN-124K-HD and close the front panel.



1. After inserting HDD and closing the front door, carefully push the tray until it is seated into position. Excessive force may damage its mechanical parts.
2. If the HDD is inserted backward into the tray, forcing the device may damage the BPN-124K-HD HDD cage.

#### Eject HDD from the HDD cage

1. Use the key "clockwise 90°" to open the door.
2. Take the HDD out from HDD cage, and firmly close the front door use the key, "Counter-clockwise 90°" to lock the door.

1. Do not eject the HDD while it is busy.
2. Carefully take the HDD out from BPN-124K-HD HDD cage. The HDD can reach temperatures over 50°C. It will not burn the fingers but should be handled with care.

#### Statement

The contents of user's manual are protected under copyright law. Any organization or individual can not make copy and save it in the information bank or the retrieval system by any method or form without the authorization of iStarUSA. iStarUSA is not responsible for any loss in the process of using the HDD cage.