

BPX-124-SA 5.25" to 4x 2.5" SATA 6.0 Gbps HDD/SSD Hot-Swap Rack

User Manual



Specifications:

| | |
|-------------------------------|--------------------------------------|
| Hot Swap | 2.5" Drive: 4 |
| Standard Drive Bays | 5.25" Drive: 1 |
| Dimensions (W x H x D) | 146.0 mm x 42.0 mm x 170 mm |
| Material | Plastic body with aluminum top cover |
| HDD Interface | SATA/SAS |
| Weight | 0.2 kg |
| Cable | SATA Cable Included (4pcs) |

iStarUSA - Powered by iStarUSA Group

727 Phillips Drive City of Industry, CA 91748
 United States of America
 Tel: 1-626-303-8885
 Toll-Free: 1-888-989-1189
 Email: sales@istarusa.com



Introduction:

The iStarUSA BPX-124-SA is a great recommendation for any media workstation. The unit has HDD/SSD hot-swap capabilities, which allow you to quickly swap HDD/SSDs without having to turn off the computer. The BPX-124-SA is an ideal solution to maximize hard drive storage with multiple 2.5" HDD/SSDs in a single 5.25" drive bay. The 40mm cooling fan provides excellent front-to-back cooling and airflow.

Features:

- Supports 4x 2.5" SATA/SAS HDD/SSD in one 5.25" drive bay.
- Compact multi-bay design to maximize the space in your workstation.
- Aluminum material for maximum durability and excellent heat dissipation.
- Stylish design with scratch-resistant piano finish UV coating.
- Supports SATA/SAS 6.0 Gbps speed.
- Supports HDD/SSD thickness from 7 to 12.5mm.
- Integrated high-speed cooling fan can effectively reduce HDD/SSD temperature.

Order Information:

| Model Number: | Color: | UPC Code: |
|-------------------|--------------|---------------------|
| BPX-124-SA | Black | 846813036153 |

Hardware Information: Front View



D1

Latch: Provides a convenient way to secure your hard disk.

D2

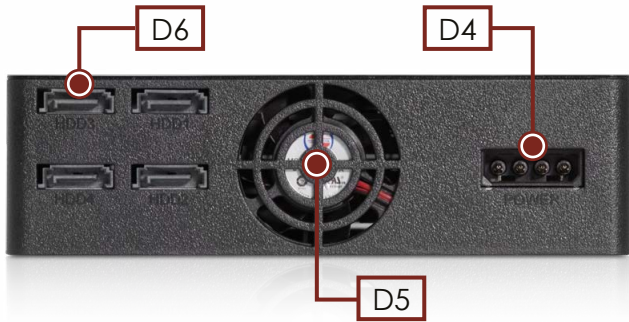
HDD access LED: Blinking red illumination for HDD access.

*Note: LED indicator might not work with some SSDs.

D3

HDD power LED: Solid blue illumination for HDD power on.

Hardware Information: Rear View



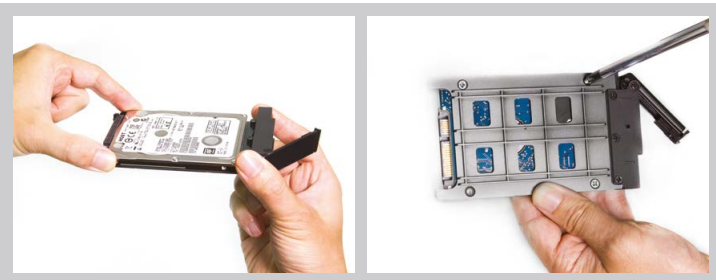
- D4**
4-pin Molex D-type power connector
- D5**
40mm cooling fan (4000rpm)
- D6**
4x SATA 7-pin data connectors

Hard Drive Installation

- 1) Press the latch left to unlock the tray, then hold the latch to pull out the HDD tray.



- 2) Place HDD/SSD onto the tray, and use M3 countersink screws to secure the HDD/SSD.



- 3) Insert the trays back to the enclosure and close the latch to secure the trays.



BPX-124-SA Installation

- 1) Install BPX-124-SA to a computer with one 5.25" drive bay available
- 2) Connect SATA 7-pin data cables. one end to the BPX-124-SA and the other end to a motherboard/controller



- 3) Connect a 4-pin Molex connector from a power supply to the BPX-124-SA.



Included Accessories

- Screws
- 4 SATA cables

