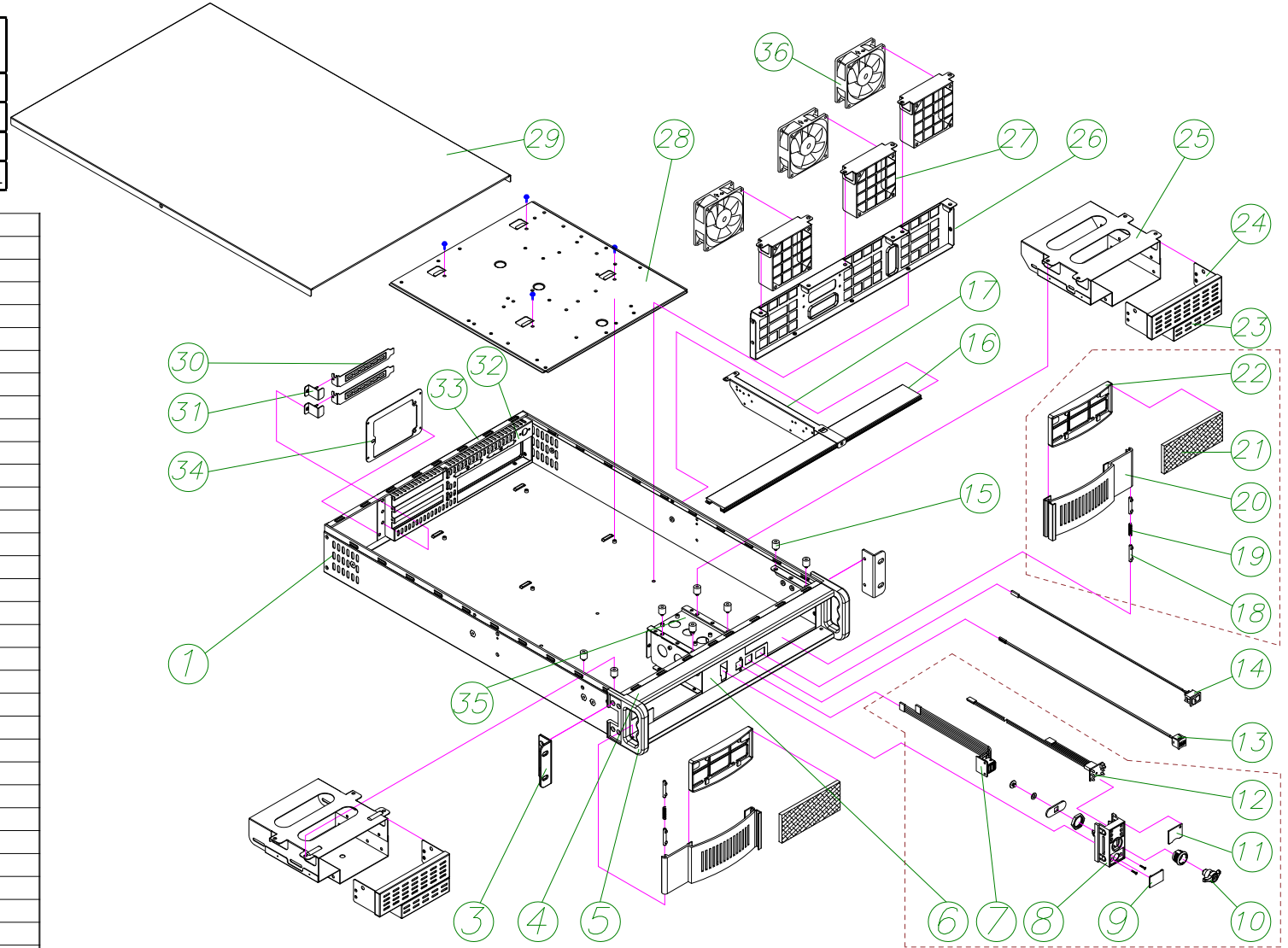


D-200L

Inventory Type	Item #
A	06;15;16;28;29;36;38;42
B	03;05;07;12;13;14;37
C	08;09;10;11;31
D	01;17;18;19;23;24;25;26;27;30;34;35;39;40;41



	NO	PARTS NO	DESCRIPTION
	01	DD-200L-FRAME	Main Chassis
	02		
	03	DD-200-EAR-L	Side Holder (*2)
	04	DD-FRONTBAR	Decoration Bar(*2)
	05	DD-200-HANDLE	Aluminum Alloy Handle (*2)
	06	DD-200-FPANEL	Front Panel
	07	DD-USBHEAD	USB Connector(Optional)
DD-CTRLKSET-2U 37	08	DD-LOCKHLD-2U	Lock Holder
	09	DD-USB-ACRYL-2U	USB Acrylic
	10	DD-KEYLOCK	Key Lock
	11	DD-LED6-ACRYL	LED Acrylic
	12	DD-LED	LED Indicator (*6)
	13	DD-RESET	Reset Switch
	14	DD-PWSWITCH	Power Switch
	15	DD-STEELSTDF	Drive Cage Standoffs
	16	DD-FANBAR	Support
	17	DD-200-RISERBAR-L	RiserCard Holder
DD-200-DBLACK 38	18	DD-SPINDLE-2U	Door Spindle (*4)
	19	DD-SPRING-2U	Spring (*2)
	20		Aluminum Alloy Door (*2)
DD-200-FILTER 39	21		Air Filter (*2)
	22		Filter Holder (*2)
DD-1B15-CAGE 40	23	DD-35CVR	3.5" FDD Cover Panel(*2)
	24	DD-525CVR	5.25" HDD/FDD Cover Panel(*2)
DD-FANSET-2L 41	25		Disk Holder (*2)
	26	DD-FANFRAME-2U	Fan Array Frame
	27	DD-FANHLD-8-2U	8cm Fan Holder (*3)
	28	DD-EATX-MB-2L	M/B Mounting Plate
	29	DD-SOLIDLID-2L	Top Cover(FAN HOLE)
	30	DD-SLOTCLR-SD	Slot Cover (*2)
	31	DD-SLOTHLD	Slot Cover Holder (*2)
DD-200-BP-STD 42	32		Back Window
	33		Back Panel
	34	BRT-D2U-C	Power Change Plate
	35	DD-CTRFRAME-2U	Central HDD Frame
	36	DD-FAN80	80mm Fan 3pin
	37		
	38		
	39		
	40		
	41		