

# D-313SE-MATX-DT

3U Compact Server/Desktop Chassis  
compatible with PS2 Power Supply



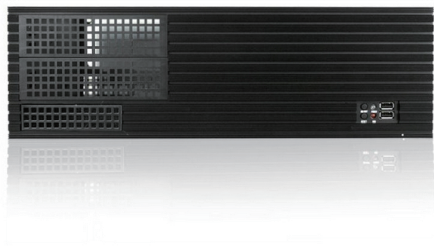
## Features

- Power and HDD LED
- Supports Front Access USB2.0 x2
- Industrial Chassis with 15" in Depth
- Support 4 x Full Height Add-on Cards
- Support ATX PS2 Power Supply
- Power and Reset Switch

## Specifications

Model Number	Expansion Slots	Motherboard Size	
D-313SE-MATX-DT	4 (full height & up to 165mm deep with hdds installed)	9.6 x 9.6 (microATX, mini-ITX)	
RoHS Compliance	Material of Front Bezel	Optional Fan:	
YES	Aluminum	120mm x1, 80mm x1, 60mm x2	
Form factor	Material of Handle	Dimensions (WxHxD)	
3 U	Aluminum	Width	19.00" ( 482.6 mm )
		Height	5.25" ( 133.3 mm )
		Depth	15.56" ( 395.2 mm )
Standard Drive Bays	Material of Main Chassis		
3.5" Drives: 1      5.25" Drives: 2	Zinc-Coated Steel		
3.5" Drive (internal): 4			
Indicators	Color of Front Bezel		
Power, HDD	Black		
Switches	Color of Main Chassis		
Power, Reset	Black		
Supported PSU Type	Front Connector		
PS2	2x USB 2.0		

## Front View



## Inside View

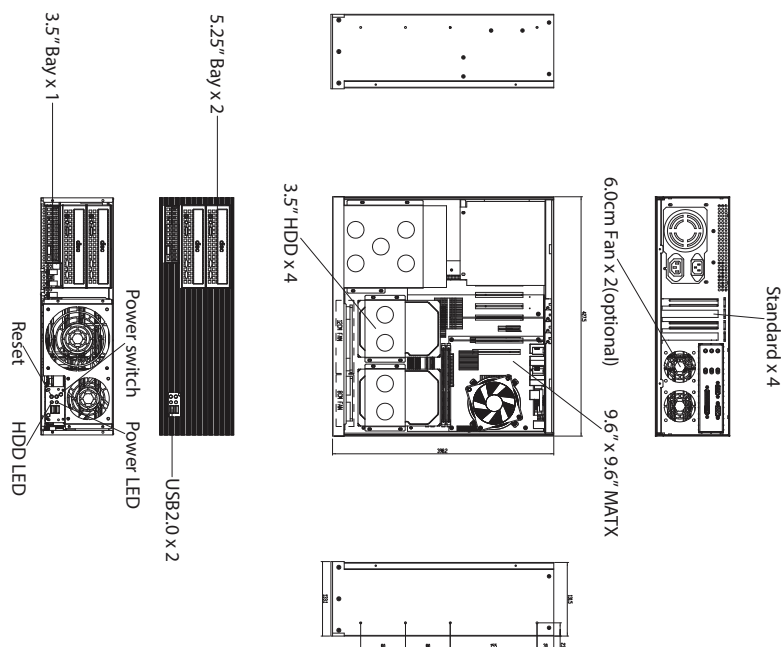


## Rear View



We at iStarUSA Group offer OEM/ODM services for Industrial Power, Custom Power, Chassis, Cabinets, and Data Storage. Through our skilled metal bending, milling, and silk screening we can provide you with unique customizations that will make your product stand out from the rest. With iStarUSA Group's OEM/ODM Solutions you can be sure to receive one-of-a-kind products for your one-of-a-kind business.

## Dimensions



## Ordering Information

Model	Description
D-313SE-MATX-DT	3U Compact Server/Desktop Chassis compatible with PS2 Power Supply

## Compatible Power

PSU Model	Description
TC-500PD8B	ATX 500W 80PLUS Bronze
TC-700PD8B	700W 80PLUS Bronze ATX PSU

## Optional Accessories

Category	Model
Drive Cage	BPN Trayless Drive Cage Series BPU Tray Drive Cage Series
Sliding Rail Kit	TC-RAIL Series Sliding Rail Kit