

D-416-4B126SA

4U Compact Stylish Rackmount Chassis
24 x 2.5" Hotswap Drives PS2 PSU



Features

- Supports front access USB ports
- Supports standard ATX power supplies
- Compatible with redundant power supplies
- 24 hot-swappable bays for 2.5" HDDs/SSDs
- Key lock front bezel to prevent unauthorized access

Specifications

Model Number	Expansion Slots	Motherboard Size	
D-416-4B126SA	7	12 x 9.6 (ATX, microATX)	
RoHS Compliance	Material of Front Bezel	Optional Fan:	
YES	Aluminum	80mm x2, 60mm x2	
Form factor	Material of Handle	Dimensions (WxHxD)	
4 U	Aluminum	Width	19.00" (482.6 mm)
		Height	7.00" (177.8 mm)
		Depth	21.77" (553.0 mm)
Standard Drive Bays	Material of Main Chassis		
Hotswap 2.5": 24 5.25" Drives: 3 3.5" Drive (internal): 2	Galvanized Steel		
Hotswap HDD Type:	Color of Front Bezel		
2.5" SATA I/II/III	Black		
Indicators	Color of Main Chassis		
Power, HDD	Black		
Switches	Front Connector		
Power, Reset	Front USB 2.0 x 2 Connector		

Front View



Inside View

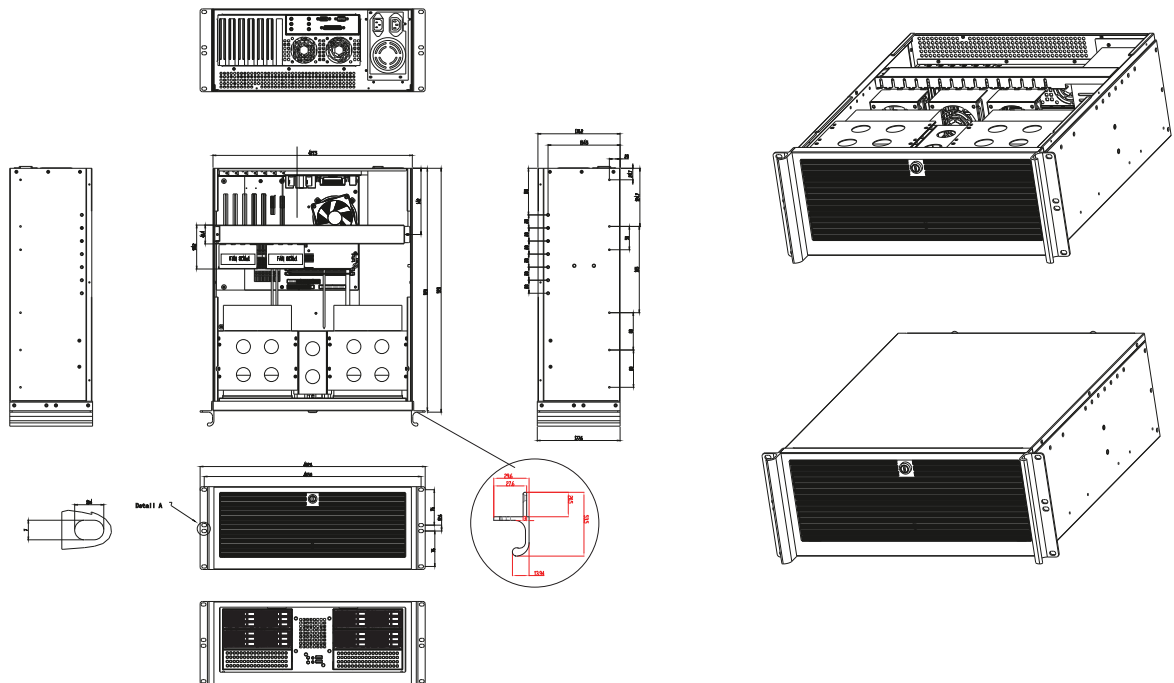


Rear View



We at iStarUSA Group offer OEM/ODM services for Industrial Power, Custom Power, Chassis, Cabinets, and Data Storage. Through our skilled metal bending, milling, and silk screening we can provide you with unique customizations that will make your product stand out from the rest. With iStarUSA Group's OEM/ODM Solutions you can be sure to receive one-of-a-kind products for your one-of-a-kind business.

Dimensions



Ordering Information

Model	Description
D-416-4B126SA	4U Compact Stylish Rackmount Chassis 24 x 2.5" Hotswap Drives PS2 PSU

Compatible Power

PSU Model	Description
IS-400R8P	IS 400w x 2 redundant
IS-550R8P	Mini 550w Redundant

Optional Accessories

Category	Model
Drive Cage	BPN Trayless Drive Cage Series BPU Tray Drive Cage Series
Sliding Rail Kit	TC-RAIL Series Sliding Rail Kit