

D-416-B10SA

4U Compact Stylish Rackmount Chassis
10 x 3.5" Hotswap Drives PS2 PSU



Features

- Supports front access USB ports
- Supports standard ATX PSU
- Compatible with redundant power supplies
- 10 hot-swappable bays for 3.5" HDDs
- Supports 3.5" SAS and SATA hard drives
- Key lock front bezel to prevent unauthorized access

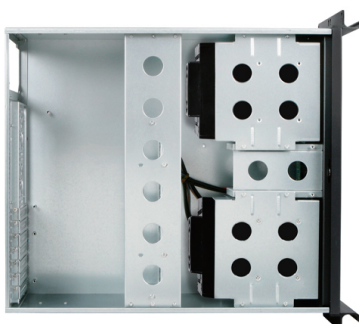
Specifications

Model Number	Supported PSU Type	Color of Main Chassis	
D-416-B10SA	PS2	Black	
RoHS Compliance	Expansion Slots	Front Connector	
YES	7	2x USB 2.0	
Form factor	Security	Motherboard Size	
4 U	Front Bezel Key Lock	12 x 9.6 (ATX, microATX)	
Standard Drive Bays	Material of Front Bezel	Optional Fan:	
3.5" Drive (internal): 2 Hotswap 3.5": 10	Aluminum	80mm x2, 60mm x2	
Hotswap HDD Type:	Material of Handle	Dimensions (WxHxD)	
3.5" SAS I/II & SATA I/II/III	Aluminum	Width	19.00" (482.6 mm)
		Height	7.00" (177.8 mm)
		Depth	21.77" (553.0 mm)
Indicators	Material of Main Chassis		
Power, HDD	Galvanized Steel		
Switches	Color of Front Bezel		
Power, Reset	Black		

Front View



Inside View

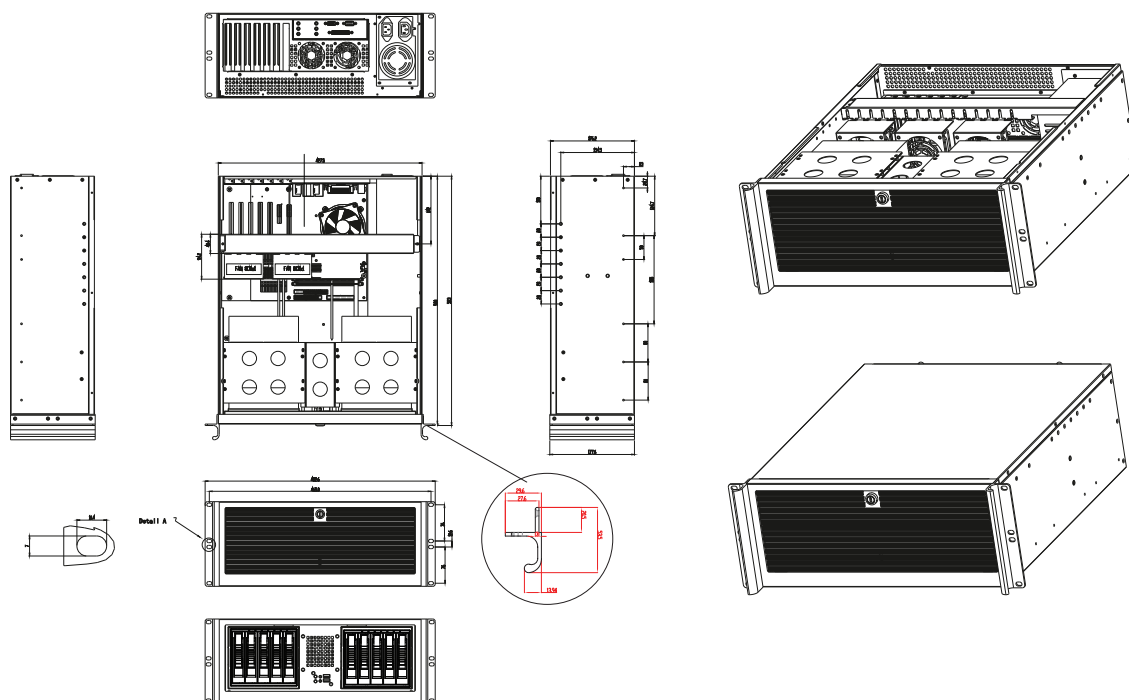


Rear View



We at iStarUSA Group offer OEM/ODM services for Industrial Power, Custom Power, Chassis, Cabinets, and Data Storage. Through our skilled metal bending, milling, and silk screening we can provide you with unique customizations that will make your product stand out from the rest. With iStarUSA Group's OEM/ODM Solutions you can be sure to receive one-of-a-kind products for your one-of-a-kind business.

Dimensions



Ordering Information

Model	Description
D416-B10BK	D-416-B10SA with Black HDD Handle
D416-B10PL	D-416-B10SA with Lockable HDD Handle

Compatible Power

PSU Model	Description
IS-400R8P	IS 400w x 2 redundant
IS-550R8P	Mini 550w Redundant

Optional Accessories

Category	Model
Sliding Rail Kit	TC-RAIL Series Sliding Rail Kit