

D-416-DE4

4U Compact Stylish 4x3.5" Trayless Hotswap Rackmount Chassis



Features

- Supports front access USB ports
- Supports standard ATX PSU
- Compatible with redundant power supplies
- 4 trayless hot-swappable bays for 3.5" HDDs
- Supports 3.5" SAS and SATA hard drives
- Key lock front bezel to prevent unauthorized access

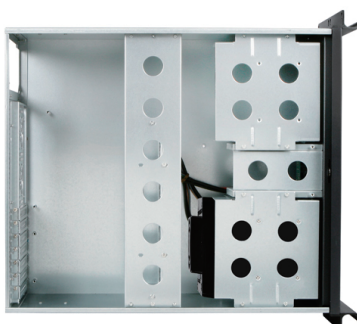
Specifications

Model Number	Supported PSU Type	Motherboard Size	
D-416-DE4	PS2	12 x 9.6 (ATX, microATX)	
RoHS Compliance	Expansion Slots	Optional Fan:	
YES	7	80mm x2, 60mm x2	
Form factor	Material of Front Bezel	Dimensions (WxHxD)	
4 U	Aluminum	Width	19.00" (482.6 mm)
		Height	7.00" (177.8 mm)
		Depth	21.77" (553.0 mm)
Standard Drive Bays	Material of Handle		
3.5" Drive (internal): 2 5.25" Drives: 3	Aluminum		
Hotswap 3.5": 4			
Hotswap HDD Type:	Material of Main Chassis		
3.5" SAS I/II & SATA I/II/III	Galvanized Steel		
Indicators	Color of Front Bezel		
Power, HDD	Black		
Switches	Color of Main Chassis		
Power, Reset	Black		

Front View



Inside View

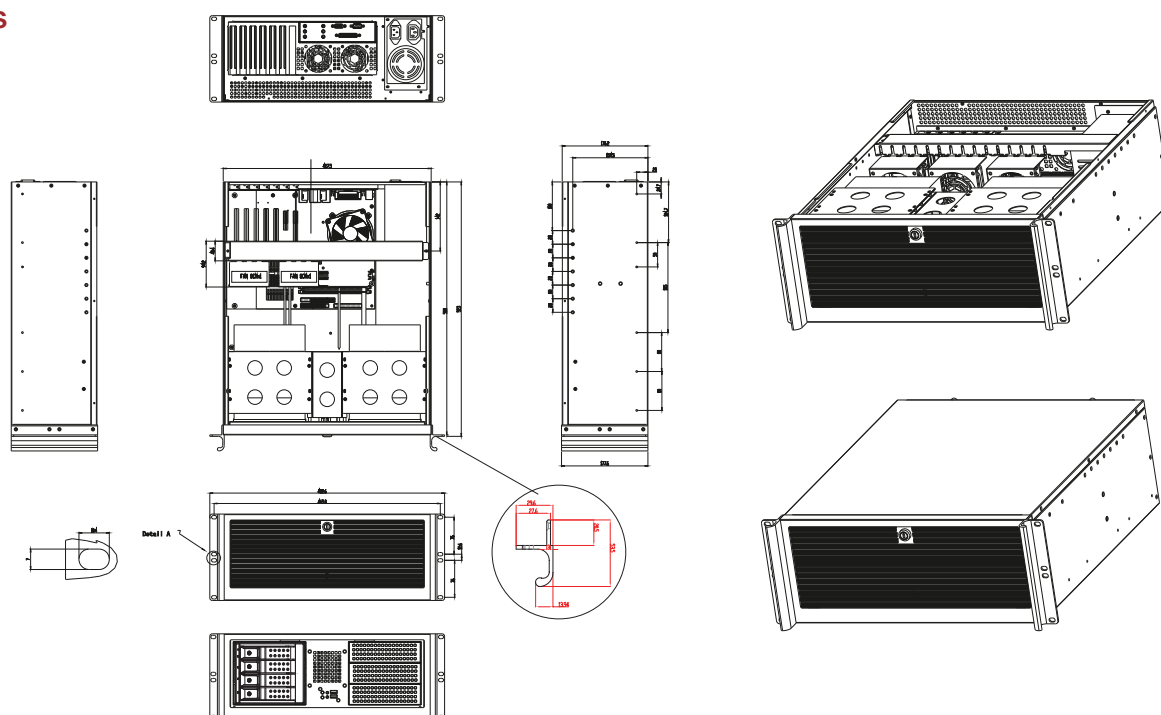


Rear View



We at iStarUSA Group offer OEM/ODM services for Industrial Power, Custom Power, Chassis, Cabinets, and Data Storage. Through our skilled metal bending, milling, and silk screening we can provide you with unique customizations that will make your product stand out from the rest. With iStarUSA Group's OEM/ODM Solutions you can be sure to receive one-of-a-kind products for your one-of-a-kind business.

Dimensions



Ordering Information

Model	Description
D416-DE4BK	D-416-DE4 with Black HDD Handle
D416-DE4BL	D-416-DE4 with Blue HDD Handle
D416-DE4RD	D-416-DE4 with Red HDD Handle
D416-DE4SL	D-416-DE4 with Silver HDD Handle
D416-DE4WB	D-416-DE4 with Wood Look HDD Handle

Compatible Power

PSU Model	Description
IS-400R8P	IS 400w x 2 redundant
IS-550R8P	Mini 550w Redundant

Optional Accessories

Category	Model
Drive Cage	BPN Trayless Drive Cage Series
	BPU Tray Drive Cage Series
FANS	DD-FAN60-Q
	DD-FAN80
Sliding Rail Kit	TC-RAIL Series Sliding Rail Kit