

# E-20

## 2U Rugged 15" Compact Rackmount Chassis



### Features

- FCompact 15" Depth
- 1.6mm Steel Body Chassis
- Front Access USB2.0 x2
- Air Filter
- 80mm Cooling Fan

### Specifications

Model Number	Material of Main Chassis	
E-20	1.6mm SECC Zinc-Coated Steel	
RoHS Compliance	Air Filter	
YES	Washable	
Form factor	Motherboard Size	
2 U	12 x 9.6 (ATX, microATX, mini-ITX)	
Standard Drive Bays	Cooling Fan	
3.5" Drive (internal): 2    5.25" Drives: 1 Slim 3.5" FDD: 1	1x80mm	
Indicators	Dimensions (WxHxD)	
LEDs for Power ON/OFF and HDD	Width	19.00" ( 482.6 mm )
	Height	3.50" ( 88.9 mm )
	Depth	15.00" ( 381.0 mm )
Switches		
Power ON/OFF, System & Alarm Reset		
Expansion Slots		
3		

### Front View



### Inside View

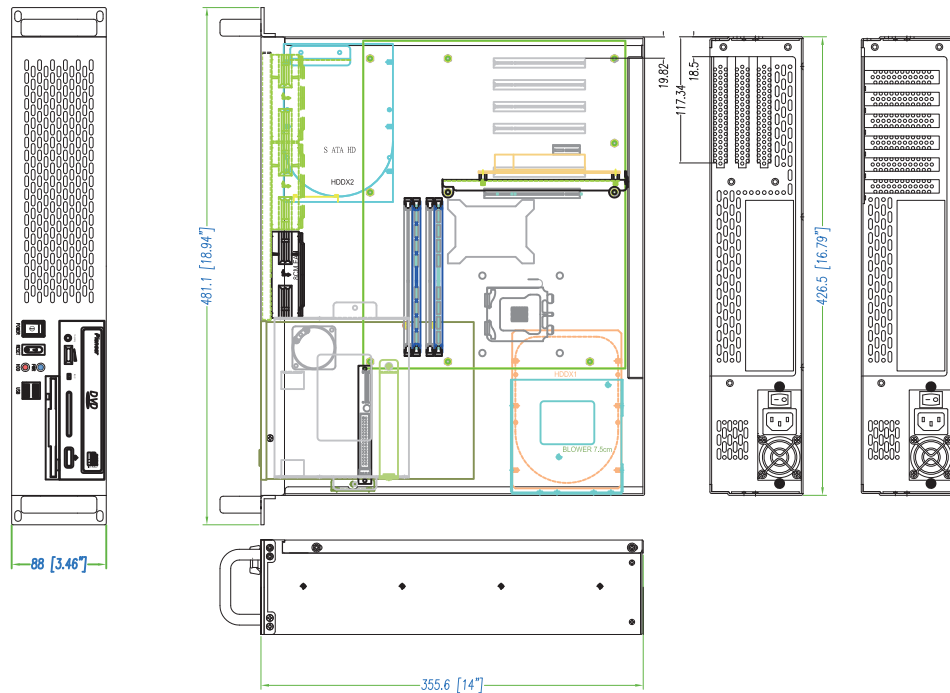


### Rear View



We at iStarUSA Group offer OEM/ODM services for Industrial Power, Custom Power, Chassis, Cabinets, and Data Storage. Through our skilled metal bending, milling, and silk screening we can provide you with unique customizations that will make your product stand out from the rest. With iStarUSA Group's OEM/ODM Solutions you can be sure to receive one-of-a-kind products for your one-of-a-kind business.

## Dimensions



## Ordering Information

Model	Description
E-20	2U Rugged 15" Compact Rackmount Chassis

## Compatible Power

PSU Model	Description
IS-1U40PD8	IS 1U 80PLUS 400W
IS-1U50PD8	IS 1U 80PLUS 500W

## Optional Accessories

Category	Model
Drive Cage	BPN Trayless Drive Cage Series
	BPU Tray Drive Cage Series
Sliding Rail Kit	TC-RAIL Series Sliding Rail Kit

## Compatible Riser Card

Model	Description
DD-630660-C7	2U 2 PCIe x16 Riser Card
DD-741611-C7	2U Riser card-1 PCIe x16 and 2 PCI32 Riser Card

*\* We offer a great selections of riser cards. Please contact our sales engineers for other specs of riser cards*