

E-40

4U Rugged 15" Compact Rackmount Chassis



Features

- Compact 15" Depth
- 1.6mm Steel Body Chassis
- Shock Absorbing Drive Cage
- Front Access USB2.0 x2
- 120mm x1 Cooling Fan
- Removable Air Filter
- Fan and Temperature Monitor Option
- Industrial Keylock Bezel

Specifications

| Model Number | Security | Air Filter | |
|-------------------------------------|------------------------------|--------------------------|---------------------|
| E-40 | Front Bezel | Removable & Washable | |
| RoHS Compliance | Material of Front Bezel | Motherboard Size | |
| YES | 1.6mm SECC Zinc-Coated Steel | 12 x 9.6 (ATX, microATX) | |
| Form factor | Material of Handle | Cooling Fan | |
| 4 U | 1.6mm SECC Zinc-Coated Steel | 1x120mm | |
| Standard Drive Bays | Material of Main Chassis | Dimensions (WxHxD) | |
| 3.5" Drives: 1 5.25" Drives: 2 | 1.6mm SECC Zinc-Coated Steel | Width | 19.00" (482.6 mm) |
| 3.5" Drive (internal): 2 | | Height | 6.97" (177.0 mm) |
| Indicators | Color of Front Bezel | Depth | 15.00" (381.0 mm) |
| LEDs for Power ON/OFF and HDD | Black | | |
| Switches | Color of Main Chassis | | |
| Power ON/OFF, System Reset | Black | | |
| Expansion Slots | Front Connector | | |
| 7 | Front USB 2.0 x 2 Connector | | |

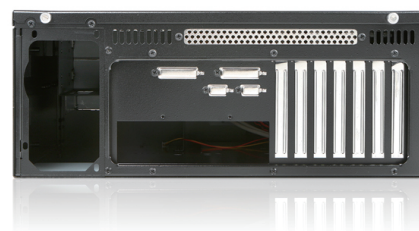
Front View



Inside View

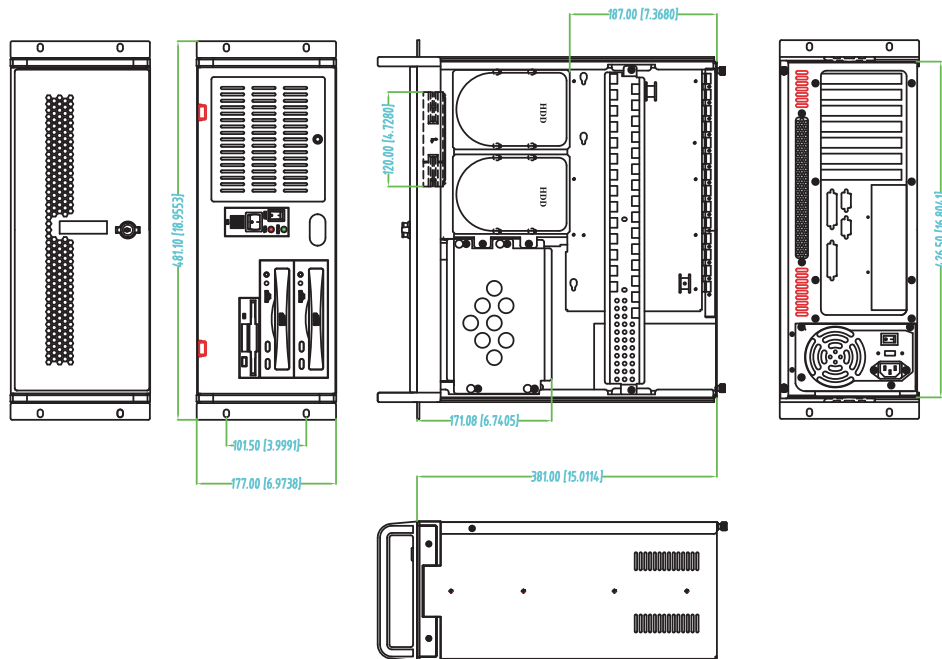


Rear View



We at iStarUSA Group offer OEM/ODM services for Industrial Power, Custom Power, Chassis, Cabinets, and Data Storage. Through our skilled metal bending, milling, and silk screening we can provide you with unique customizations that will make your product stand out from the rest. With iStarUSA Group's OEM/ODM Solutions you can be sure to receive one-of-a-kind products for your one-of-a-kind business.

Dimensions



Ordering Information

| Model | Description |
|-------|---|
| E-40 | 4U Rugged 15" Compact Rackmount Chassis |

Compatible Power

| PSU Model | Description |
|------------|----------------------------|
| TC-700PD8B | 700W 80PLUS Bronze ATX PSU |

Optional Accessories

| Category | Model |
|------------------|---------------------------------|
| Drive Cage | BPN Trayless Drive Cage Series |
| | BPU Tray Drive Cage Series |
| Sliding Rail Kit | TC-RAIL Series Sliding Rail Kit |