

# EA-4M20EXP-JB

## 4U 20-Bay SAS Expander Storage JBOD Rackmount Chassis



### Features

- Advance Thermal Cooling Design with 3 x 120mm Cooling Fans
- Support 5.25" Size SAS Expander
- miniSAS (SFF-8087) HDD Backplane
- Power + Fan Failure + HDD LED Indicator
- Alarm Reset Switch
- Fully RoHS Compliance
- Support 6.0Gb/s SAS/SATA Hard Drives

### Specifications

Model Number	Expansion Slots
EA-4M20EXP-JB	6
RoHS Compliance	Material of Front Bezel
YES	Texture-Coated Aluminum
Form factor	Material of Handle
4 U	Aluminum
Standard Drive Bays	Material of Main Chassis
Hotswap 3.5": 20 5.25" Drives: 1 (for SAS Expander)	Heavy-Duty Cold-Roll Steel with Zinc-Plated Bright Chromate
Hotswap HDD Type:	Cooling Fan
3.5" SAS I/II & SATA I/II/III	3x120mm
Indicators	Dimensions (WxHxD)
Power + Fan Failure + HDD LED	Width 19.00" ( 482.6 mm ) Height 7.00" ( 177.8 mm ) Depth 22.50" ( 571.5 mm )
Switches	
Power On/Off, Mute	

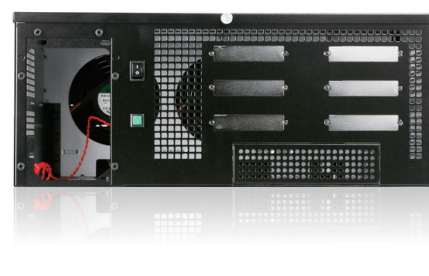
### Front View



### Inside View

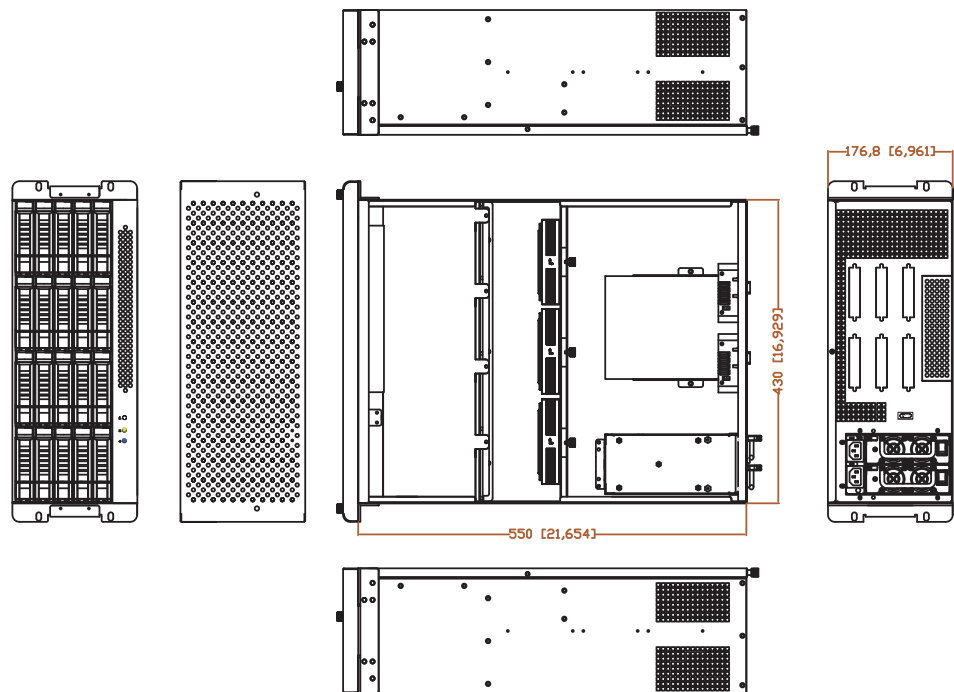


### Rear View



We at iStarUSA Group offer OEM/ODM services for Industrial Power, Custom Power, Chassis, Cabinets, and Data Storage. Through our skilled metal bending, milling, and silk screening we can provide you with unique customizations that will make your product stand out from the rest. With iStarUSA Group's OEM/ODM Solutions you can be sure to receive one-of-a-kind products for your one-of-a-kind business.

Dimensions



Ordering Information

Model	Description
EA-4M20EXP-JB	4U 20-Bay SAS Expander Storage JBOD Rackmount Chassis

Compatible Power

PSU Model	Description
IS-550R8P	Mini 550w Redundant

Optional Accessories

Category	Model
Sliding Rail Kit	TC-RAIL Series Sliding Rail Kit