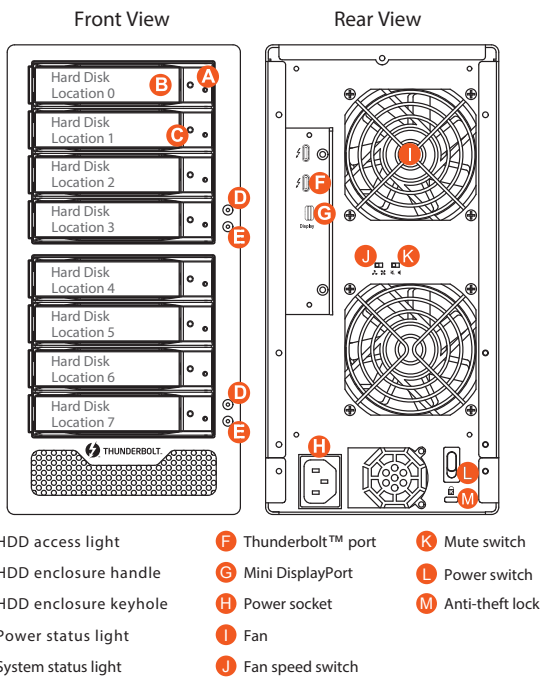


## RAGE80-TB3 Quick Setup Guide

### Product Illustration and Parts List

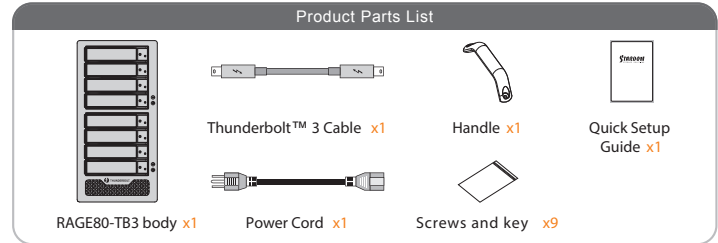


**Note:**  
If you do not have 8 HDDs, please follow the above HDD number sequence to load all your in hand HDDs.

V1.0 (Mar. 2018)

1

The following items should be inside the package upon opening:



- Please check the product and accessories for any defect or missing parts. If you have any questions, please contact your product supplier.
- Please visit the official website ([www.iStarUSA.com](http://www.iStarUSA.com)) to download user manuals, drivers and other related resources.

### The Indication of HDD Status

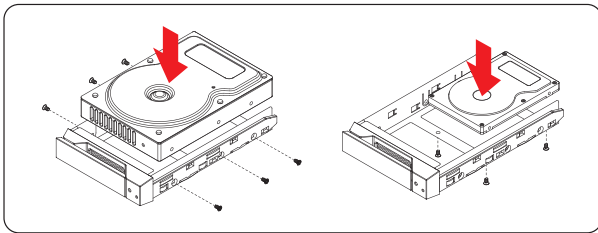
Status	System indicator Light		HDD Status Light	Buzzer
	Blue light	Red light		
No HDD detected	Always on	N/A	Red light always on	N/A
RAID failed	Always on	Flashing	Red light always on	YES
RAID failed	Always on	Flashing	Purple light always on	YES
Data access	Always on	N/A	Blue light flashing	N/A
HDD idle	Always on	N/A	Blue light always on	N/A
Rebuilding data - Source HDD	Always on	N/A	Blue light flashing	N/A
Rebuilding data - Target HDD	Always on	N/A	Blue light flashing	N/A
Fan failure	Always on	Flashing	Blue light always on	YES
Overheat	Always on	Flashing	Blue light always on	YES

※ When reconstructing data, be sure to follow the Marvell Storage Utility (MSU) for more information.

2

### Hardware Installation

Please install RAGE80-TB3 as the following instruction.



**Note:** Please avoid using hard disk drives from different manufacturers or different models from the same manufacturer as this may impact system performance.

1. When you open the package, please immediately check the product and included parts for any damage or missing parts. If there is a problem with the product or included parts please contact your supplier immediately.
2. Place the device on a flat, even surface. Make sure that the cooling fan is not blocked and there is sufficient surrounding space for cooling. (Keep away from water or other environments that may cause product damage).
3. Please insert the pin included with the parts pack into the keyhole to release the HDD enclosure handle and remove the HDD enclosure.
4. Place the hard disk in the HDD enclosure and secure it in place with the included screws; this will prevent damage to the hard disk from external vibration.
5. Once the hard disk is installed, slide the enclosure into the system and close the handle.
6. Select the appropriate cable from the accessories pack depending on the interface. Connect the RAGE80-TB3 backplate connection port to the corresponding port on the computer.
7. Connect the AC Power cable to the RAGE80-TB3. Plug the connector into the power socket then start the system.
8. Your operating system will automatically detect available capacity once the device finishes booting. Once the device has been detected, please follow instructions given by the operating system and format the system. Once the hard disk has been formatted, the RAGE80-TB3 system can be used.
9. If the computer is unable to detect the system, please install the drivers from official website ([www.iStarUSA.com](http://www.iStarUSA.com))

3

### Important Notice

1. Please make sure that the hard drives are free from bad blocks or defects prior to installation in order to avoid system crashes or data loss.
2. Whenever turning off or unplugging the RAGE80-TB3 from your computer system becomes necessary, always remember to safely remove it from your operating system first.
3. When the RAGE80-TB3 is connected to the computer system, it's prohibited to remove, insert or swap the hard drive while data transfer is being performed.
4. If you will be incorporating either software or hardware RAID functionality to operate with the RAGE80-TB3, it is important to understand the RAID level and its component that will be incorporated and the precautions to take as each RAID level and component may function differently and contains various limitations.
5. RAGE80-TB3 will go into sleep mode when Thunderbolt™ 3 cable is not connected, while fan and LED indication of RAGE80-TB3 will not be functioning until connecting with Thunderbolt™ 3 cable.
6. When RAGE80-TB3 goes into sleep mode that fan and LED indication of RAGE80-TB3 will not be functioning, until RAGE80-TB3 has been reactivated.
7. If HDD was used for RAID in other devices, please revert the HDD to JBOD mode using original device/software before install in RAGE80-TB3.
8. It is highly recommended for users to back up important data contained within the drives of the RAGE80-TB3 on a regular basis or whenever the user feels necessary to a remote or a separate storage device. iStarUSA will not be responsible for any lost of data caused during the use of the RAGE80-TB3 or the recovery of the data lost.

Thank you for choosing this iStarUSA product. The information provided in this manual was checked before publication, but the actual product specifications may have changed before shipping; Latest product specifications and updates can be found at [www.iStarUSA.com](http://www.iStarUSA.com) through your sales representative. No separate notifications will be provided by our company.

All product-related content in this manual are copyrighted by iStarUSA Group.

4