

T-25HD-SI 2.5" SATA HDD/SDD Slot Carrier

User's Manual

Specifications

- Product Name: T-25HD-SI
- Interface: Support SATA III 6G
- 9.5mm thickness 2.5" SATA/ SSD HDD
- Support Hot swap
- Weight: 148g
- Dimensions: (W)120.2 mm x (H)21.13 mm x (L)143.93 mm
- Operation Temperature: 0° ~ 55° C



iStarUSA - Powered by iStarUSA Group

727 Phillips Drive City of Industry, CA 91748

United States of America

Tel: 1-626-303-8885

Toll-Free: 1-888-989-1189

Email: sales@istarusa.com



Package Content

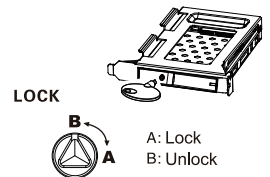
Accessories	Quantity
T-25HD-SI	1
SATA 7P Data Cable	1
SATA + 4P LED-MOLEX Cable	1
Screw	1
Manual	1
Key	1

Introduction

T-25HD-SI is an internal enclosure for 2.5 SATA HDD/SSD. The unique mechanism design is easy and quick to install and use your hard disk. It has a SATA Data and power interface to reach best data-storage performance. It works with all towers and rackmount with standard PCI slot available. T-25HD-SI is a new revolution in mobile rack field.

Key lock

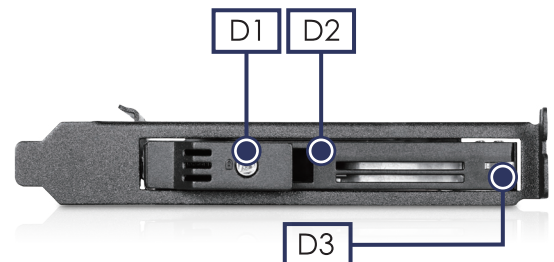
Triangular lock unlock with the key
(counter-clockwise rotated 90 degrees)



Hardware Information: Front View

Features

- Easy and quick installation
- Key lock design to avoid accidental removal
- Fits standard 9.5mm thick 2.5" HDD/SSD
- Supports SATA III
- Expands one additional 2.5" HDD/SSD from a idle PCI slot

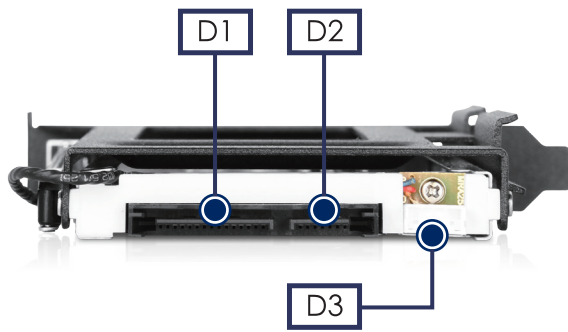


D-1: Lock

D-2: HDD front panel

D-3: HDD LED indicator

Hardware Information: Rear View



D-1: SATA Power connector (15P)

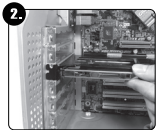
D-2: SATA Data connector (7P)

D-3: LED Access port (4P)

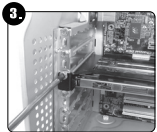
T-25HD-SI Installation:



Take off one PCI slot bracket



Install T-25HD-SI to the empty slot



Tighten the screw to secure T-25HD-SI



Installation done

2.5" HDD/ SSD Installation



Make sure the triangular lock is in unlocked position before pulling out the handle



Insert a 2.5" HDD/SSD into T-25HD-SI and close the panel. Turn the key lock to locked position.

1. Close the panel carefully. Excessive force may damage the mechanical parts
2. T-25HD-SI may get damaged if the HDD/SSD is inserted in wrong direction.

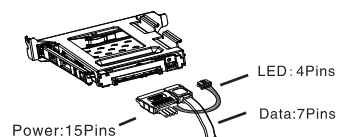
Eject 2.5" HDD/SSD

1. Turn the triangular lock to unlocked position.
2. Pull out the handle and take out the 2.5" HDD/SSD from T-25HD-SI.

1. Do not eject the HDD while it's busy
2. Carefully take the HDD out from T-25HD-SI. The HDD can reach temperatures over 50°C. It will not burn the fingers but should be handled with care.

Cable connection

1. Connect the SATA 15P connector and small 4P LED connector from the SATA+4PLED-MOLEX cable to T-25HD-SI, then connect the big 4P power connector to a Molex connector from the power supply.
2. Insert one end of the SATA data cable to T-25HD-SI and the other end to a motherboard or RAID card.



1. Be sure to connect the 4P LED wire, or the LED indicator will not work.
2. Before connecting the patent SATA+4PLED-MOLEX cable to the PC and T-25HD-SI, make sure there is no object on or beside the terminals that may effect the mechanical assembly or become a possible source of an electrical short.