

# T-35K25V-HD

3.5" to 2.5" 12Gb/s HDD Hotswap Trayless Cage with Anti-vibration Mechanism

## User's Manual



### T-35K25V-HD Manual

#### Specifications

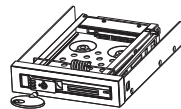
- Interface: 2.5" SAS/SATA HDD/SSD
- Plug & Play, Hot swappable
- Supports Transfer Rate up to 12Gb/s
- Weight : 233.3g / 0.514lb
- Dimensions : 101.6(W) x 25(H) x 140(L) mm / 4.00" x 0.98" x 5.51"
- Operation Temperature : 0° ~ 55°C / 32° ~ 131°F

#### Package Content

Accessories	Quantity
T-35K25V-HD	1 pc
SATA data cable	1 pc
SATA+4PLED cable	1 pc
Screw	4 pcs
Manual	1 pc
key	1 pc

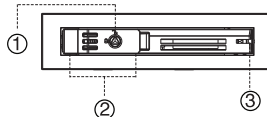
**Switching key** Triangular lock unlock with the key (counter-clockwise rotated 90 degrees),

#### LOCK

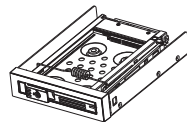


#### Front panel

1. Lock
2. Easy latch door
3. HDD LED indicator



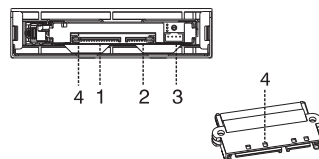
#### Interior



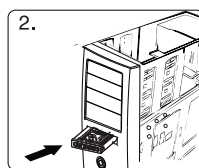
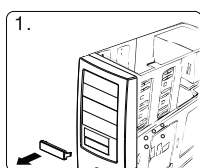
1. An Specially designed anti-vibration dampening and roller

#### Rear panel

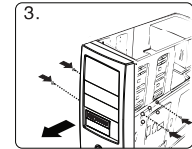
1. SATA power connector (15P)
2. SATA data connector (7P)
3. LED access port (4P)
4. Lockable SATA Connector



#### Installation

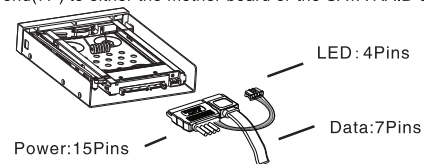


1. Remove the slot cover of an empty 3.5" floppy bay.
2. Carefully insert the T-35K25V-HD HDD cage into the bay and push it inward until the T-35K25V-HD HDD cage's screw hole is aligned with hole of the bay.
3. Secure the T-35K25V-HD HDD cage is packed with screws, use 2 screws on each side to securely hold the device.



#### Connect the HDD cable

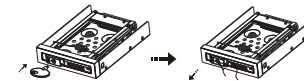
1. Insert the SATA 15P conn. into the T-35K25V-HD's 15P connector, connect the big power 4P connector to the PC's 4P power plug, and the small 4P LED wire connector to the 4P LED port at the back of T-35K25V-HD.
2. Insert one end of the SATA data cable to T-35K25V-HD, another end (7P) to either the mother board or the SATA RAID card



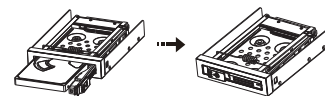
1. Be sure to connect the 4P LED wire, or the LED indicator will not be lighted up.
2. Before connecting the SATA data cable & SATA+4PLED cable with the PC or with T-35K25V-HD HDD cage, please check there is no object on or beside the terminals that may effect the mechanical assembly or become a possible source of an electrical short.

#### Install HDD

1. Triangular lock, unlock with the key (counter-clockwise rotated 90 degrees), open the panel;



2. Put the 2.5" HDD into the T-35K25V-HD and close the front panel.



1. After inserting HDD and closing the front door, carefully push the tray until it is seated into position. Excessive force may damage its mechanical parts.
2. If the HDD is inserted backward into the tray, forcing the device may damage the T-35K25V-HD HDD cage

#### Eject HDD from the HDD cage

1. Use the key "Counter-clockwise 90°" to open the door.
2. Take the HDD out from HDD cage, and firmly close the front door. use the key "Clockwise 90°" to lock the door .

1. Do not eject the HDD while it is busy
2. Carefully take the HDD out from T-35K25V-HD HDD cage. The HDD can reach temperatures over 50 °C. It will not burn the fingers but should be handled with care.

#### Statement

The contents of user's manual are protected under copyright law. Any organization or individual can not make copy and save it in the information bank or the retrieval system by any method or form without the authorization of iStarUSA. T-35K25V-HD is not responsible for any loss in the process of using the HDD cage.