

T-5K35T-SA

1 x 5.25" to Slim ODD & 1 x 3.5" HDD
Hot-Swap Trayless Drive Cage

User's Manual

iStarUSA®
Powered by iStarUSA® Group



T-5K35T-SA Manual

Features:

- Accommodates both 3.5" SATA hard drive and 12.7mm slim optical drive
- Supports hot swaps
- Unique anti-shock design patented screw-less mechanism
- The connector to give over 50,000 cycle hot swaps

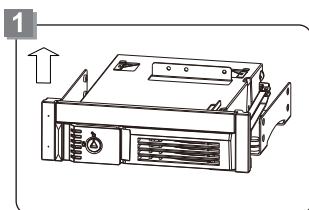
Specifications:

- Fit 3.5" Serial ATA hard drives
- Supports hot swap
- Supports SATA III (6.0Gb/s)
- Housing Assembly: 184mm(L)x148mm(W)x42mm(H) / 7.24"x 5.83"x 1.65"
- Interface: SATA or PATA for slim optical drive SATA for hard drive
- Weight: 310g / 0.68 lb
- Operating Temperature: 0~55°C / 32 ~131°F

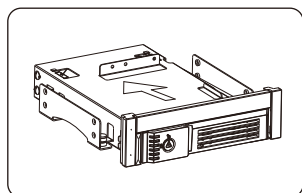
Package Content:

T-5K35T-SA	1Pcs
SATA data cable	1Pcs
SATA+4PLED-MOLEX cable	1Pcs
User's Manual	1Pcs
Screws 3x6	4Pcs
Screws 2x3	3Pcs

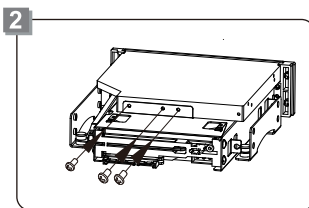
Installation :



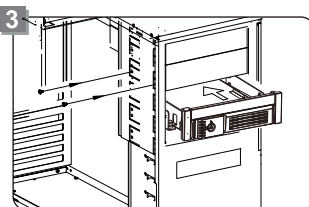
Remove the slim optical drive bay by pressing buttons of both sides.



Push 12.7mm slim optical drive into the slim drive bay.



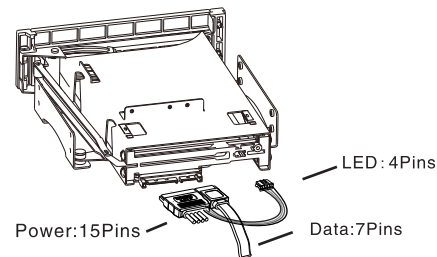
After pushing the slim optical drive into position to align with the front panel, use a magnetic screwdriver to secure three screws to the optical drive.



Place T-5K35T-SA into an available 5.25" bay in the chassis and secure with screws.

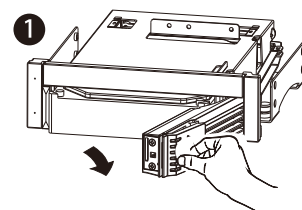
Connection :

1. Insert the SATA 15P connector into the T-5K35T-SA's 15P, connect the big power 4P connector to the PC's 4P power plug, and the small 4P LED wire connector to the 4P LED port at the back of T-5K35T-SA.
2. Insert one end of the SATA data cable to T-5K35T-SA, another end(7P) to either the motherboard or the SATA RAID card and the corresponding port on the motherboard.

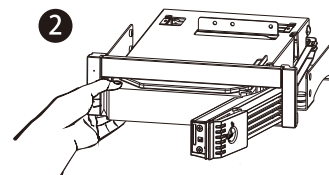


Inserting the Hard Drive:

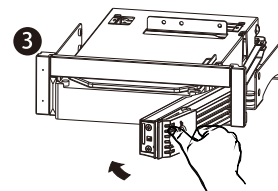
1. Release the door puller to eject the front door panel



2. Put the 3.5" HDD into the T-5K35T-SA



3. Close the front panel



1. After inserting HDD and closing the front door, carefully push the tray until it is seated into position. Excessive force may damage its mechanical parts.
2. If the HDD is inserted backward into the tray, forcing the device may damage the T-5K35T-SA HDD cage.

Removing the Hard Drive:

1. Smoothly pull the spring lock to open the front door. Make sure the lock is at a removable position to open, or it would get damaged.
2. Carefully take the HDD out of the product.



The temperature of HDD may reach over 50°C. It's not hot enough to burn hand, but be careful.



1. Hard drive is a precise and accurate device. Read the manual in advance and treat it carefully.
2. Do not eject the HDD while it is working.
3. Hold the HDD by its edge instead of touching the PCB on it.
4. iStarUSA will provide maintenance for the product malfunction problems, but not be responsible for any software or data loss accident.